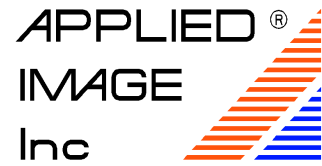


1653 East Main Street
 Rochester, NY 14609 USA
 Voice: 585.482.0300
 FAX: 585.288.5989
 imaging@appliedimage.com

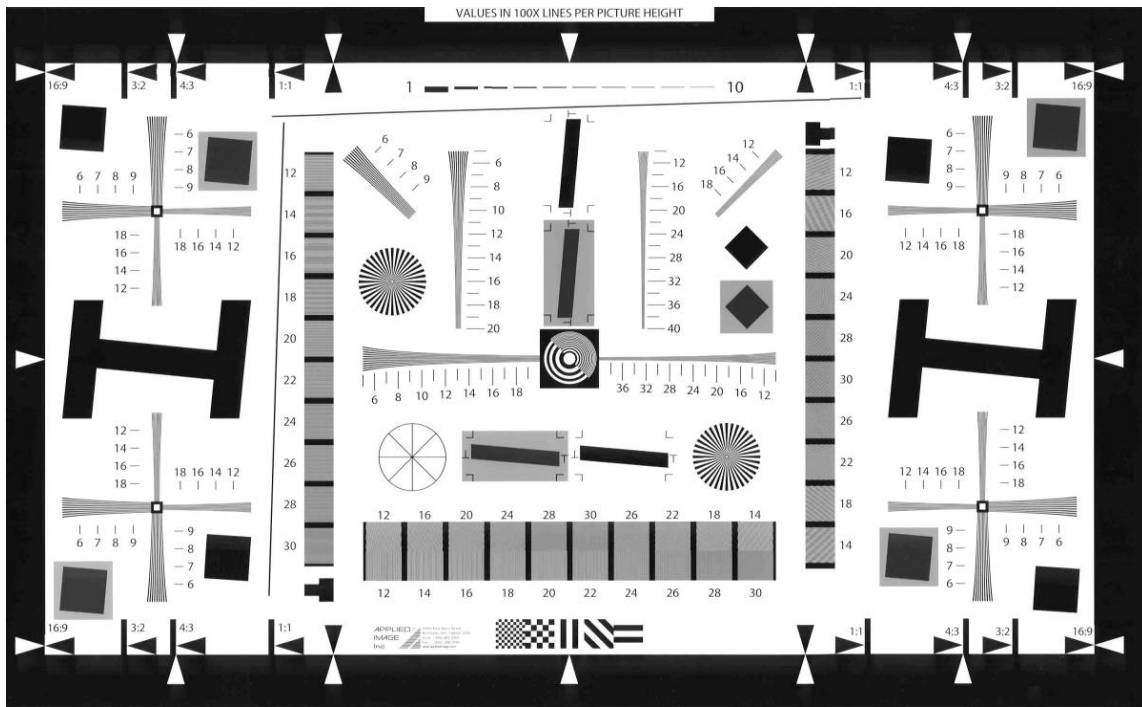
QA-77
 Enhanced Electronic Still
 Picture Test Chart
 (ISO-12233 based)
 Product Specifications



Catalog Part No: QA-77-P-RM (1x size), QA-77-2-P-RM (1/2x size),
 QA-77-3-P-RM (2x size) , QA-77-4-P-RM (4x size)

Product Name: Enhanced Digital Camera Resolution Chart

Drawing / Photo of part:



The above image is an approximate representation of the actual product.
 Specifications are subject to change without notice.

Description: Image evaluation tool for resolution and SFR (MTF) measurement

Sizes and Image Forming Material:

Part Number		Substrate Size (mm)	Active Image Area (mm)	Substrate Type	Image Forming Material
QA-77-P-RM	1X	240 x 395	200 x 356	Photo-paper	Photographic emulsion
QA-77-2-P-RM	1/2 X	198 x 120	100x178		
QA-77-3-P-RM	2X	480 x 791	400 x 711		
QA-77-4-P-RM	4X	960 x 1582	800x1422		

Note: QA-77-4-P-RM (4X size does not contain gray features, it consists of black and white line work only.

Please contact Applied Image customer service at the address noted above, for custom images, shapes and materials.


1653 East Main Street Rochester, NY 14609 USA Voice: 585.482.0300 FAX: 585.288.5989 imaging@appliedimage.com	QA-77 Enhanced Electronic Still Picture Test Chart (ISO-12233 based) Product Specifications	
--	---	---

Image Description:

(For reference, please refer to the ISO-12233 standard document.)

This test chart is an enhancement of the ISO-12223 chart and contains the following improvements:

- Extended resolution ranges. Central hyperbolic wedges measure to 4000 lw/ph (line widths per picture height). Corner wedges measure to 2000 lw/ph.
- Two star sector targets have been added.
- Additional SFR features provide SFR analysis at reduced contrast for better correlation to average pictorial grayscale image data. Dark grey rotated squares (5 degrees) have nominally 8% reflectance on grey background of nominally 32% reflectance.
- Short line-pair series (square wave sweep) and slanted short line-pair series (tilted square wave bursts) measure a range from 1200 to 3000 lw/ph.


Polarity: Positive image features

Image Contrast / Density: 40:1 / 4:1 typical

Terms: *Line widths per picture height (lw/ph)*; resolution features on this chart are labeled in line widths x 100 per picture height. Note that each line transition is counted.

Related Information:

- Standard Document ISO-12233
- Slant Edge Analysis Tool can be found at www.i3a.org/downloads_iso_tools.f

 宇宏企業股份有限公司
Radiotek Corporation

Related Parts: QA-72, QA-76, QA-62, QA-61

業務經理
蔡明坤
Dicky Tsai
0935-159-204

241台北縣三重市重新路5段609巷16號5樓之7
http://www.radiotek.com.tw
統一編號: 22864578
Tel: 02-2278-2269 #227
Fax: 02-2278-2059
E-mail: dickysai@rdtmail.com.tw
tsai.mk@gmail.com







Please contact Applied Image customer service at the address noted above, for custom images, shapes and materials.