


1653 East Main Street
Rochester, NY 14609 USA
Voice: 585.482.0300
FAX: 585.288.5989
imaging@appliedimage.com

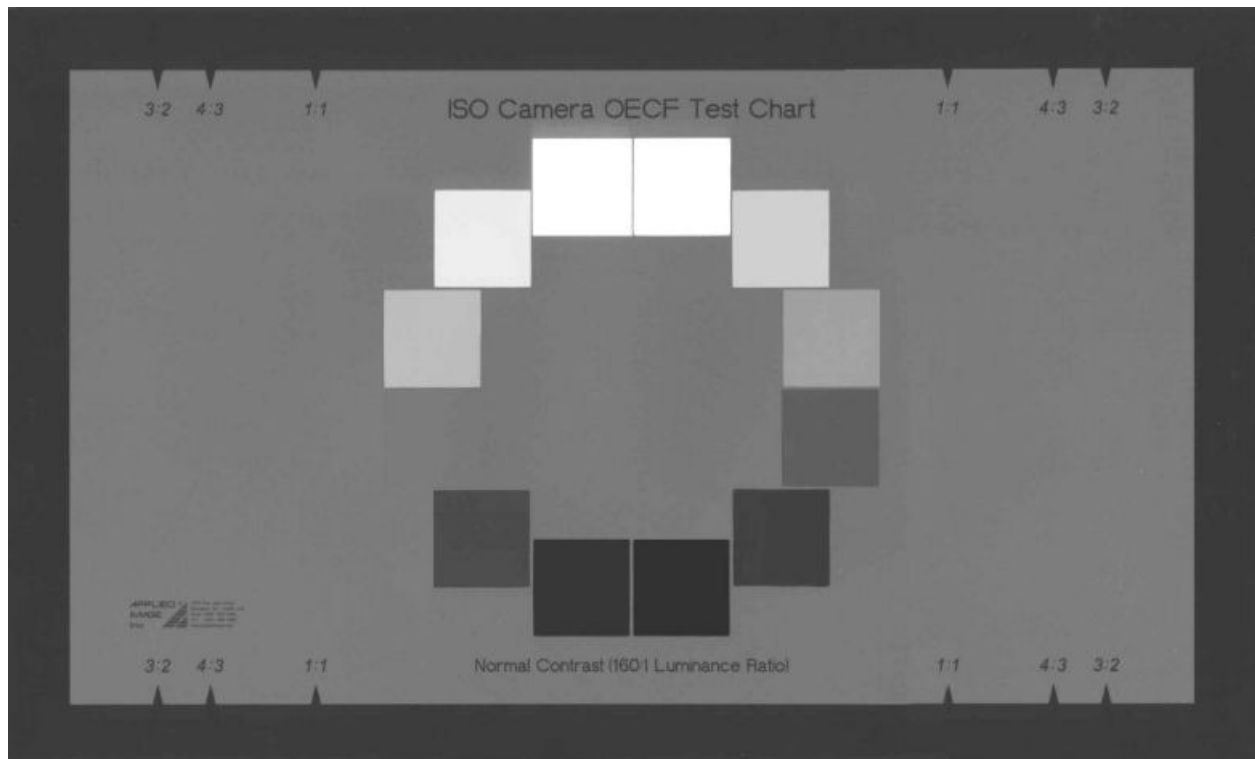
ST-52-RM
ISO-14524
Digital Camera
Contrast Chart - 160:1
Product Specifications

APPLIED[®]
IMAGE
Inc 

Catalog Part No: **ST-52-RM**

Product Name: **ISO-14524 Digital Camera Contrast Chart – 160:1**
(Electronic Still-Picture Camera Reflection Test Chart: Normal Contrast)

Drawing / Photo of part:



The above image is an approximate representation of the actual product.
Specifications are subject to change without notice.

Description: This reflection test chart is intended for measurement of opto-electronic conversion functions (OECF) of electronic cameras. The chart uses gray scale patches in visual density increments in conformance to ISO-14524:1999(E) normal contrast ratio (160:1 average scene luminance).

Substrate Size (overall): 240 x 395 mm

Substrate Type: Resin coated photographic paper

Image Forming Material: Photographic silver and ink

Please contact Applied Image customer service at the address noted above, for custom images, shapes and materials.

1653 East Main Street Rochester, NY 14609 USA Voice: 585.482.0300 FAX: 585.288.5989 imaging@appliedimage.com	ST-52-RM ISO-14524 Digital Camera Contrast Chart - 160:1 Product Specifications	APPLIED® IMAGE Inc 
--	---	--

Image Size: 200 x 356 mm total active area; 31.4 mm square patches

Image Description: 12 patches arranged in a circle target center including framing marks at aspect ratios of 1:1, 4:3 and 3:2 ratios; total active area having an aspect ratio of 16:9.

Reading Direction: Right Read Emulsion Up (RREU)

Included Densities:

<i>Step No:</i>	1	2	3	4	5	6	7	8	9	10	11	12	<i>Background</i>
<i>Density:</i>	2.30	1.86	1.53	1.27	1.05	0.87	0.70	0.56	0.43	0.31	0.20	0.10	0.84

History / Typical Use

Designed for measurement of opto-electronic conversion functions (OECFs) of electronic still-picture cameras whose output is encoded as a digital image file, this target conforms to test chart specifications in ISO-14524:1999(E) Annex A. Although this document reflects selected content of the International Standard Document ISO-14524, it is not intended to replace that document.

Terms:

- *Opto-Electronic Conversion Function (OECF)* – The relationship between input scene log luminances (units are \log_{10} candela per square meter) and corresponding digital output levels for an opto-electronic digital image capture system.
- *Digital output level* – A numerical value assigned to a particular output level or range of output levels in a digital system.
- *Electronic still-picture camera* – A camera incorporating an image sensor which outputs an analog or digital signal representing a still picture, or records an analog or digital signal representing a still picture on a removable media, such as a memory card or magnetic disk.
- *Scene luminance ratio* – The ratio of highest luminance value to lowest luminance value in a scene.
- *Image aspect ratio* – The ratio of image width to image height.

1653 East Main Street Rochester, NY 14609 USA Voice: 585.482.0300 FAX: 585.288.5989 imaging@appliedimage.com	ST-52-RM ISO-14524 Digital Camera Contrast Chart - 160:1 Product Specifications	APPLIED ® IMAGE Inc 
--	---	---

Related documents:

(Note that the following documents are available through www.iso.org or www.ansi.org.)

- International Standard Document ISO-7589, Illuminants for sensitometry – Specifications for daylight and incandescent tungsten
- International Standard Document ISO-12233, Electronic still-picture cameras – Resolution measurements
- International Standard Document ISO-14524, Electronic still-picture cameras – Methods for measuring opto-electronic conversion functions (OECFs)

Related Applied Image Products:

- QA-72; Electronic Still-Picture Camera Resolution Test Chart. This target is in conformance to International Standard Document ISO-12233 specifications.
- QA-76; Digital CINE Resolution Test Chart. Based on ISO-12233 specifications, this target has extended width for devices having higher aspect ratios.
- QA-77; Enhanced Digital Camera Resolution Chart. Also based on ISO-12233, resolution features of this target extend measurements to 4000 lw/ph. Lower contrast slant edge features provide improved SFR evaluation.



業務經理
蔡明坤
Dicky Tsai
0935-159-204

241台北縣三重市重新路5段609巷16號5樓之7
<http://www.radiotek.com.tw>
統一編號：22864578
Tel：02-2278-2269 #227
Fax：02-2278-2059
E-mail：dickytsai@rdtmail.com.tw
tsai.mk@gmail.com

