

43B Single-phase Power Quality Analyzer

FLUKE

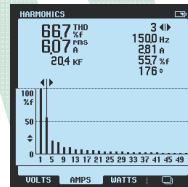


Fluke 43B

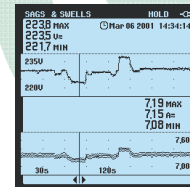
The perfect tool for tracking down single-phase power-related problems

The Fluke 43B is the choice for diagnosing and troubleshooting power quality and general equipment failures. Ease to use thanks to menu selection of the power modes, it combines the

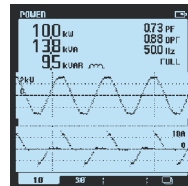
capabilities of a power quality analyzer, a 20 MHz oscilloscope, a multimeter and a data recorder in a single instrument.



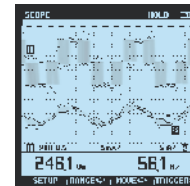
- Voltage, current, and power harmonics
- Up to 51st harmonic
- Total harmonic distortion (THD)
- Phase angle of individual harmonics



- Continuously measure volts and amps on a cycle-by-cycle basis for up to 16 days
- Use cursors to read time and date of sags and swells



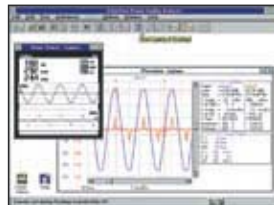
- Watts, power factor, COS ϕ , VA and VAR
- Voltage and current waveforms



- Connect-and-View™ scope for quick waveform display
- View voltage and current channels simultaneously



On all inputs



True RMS

Included Accessories

TL224 test lead set, AC220 alligator clip set, TP4 test probe set, BP120MH rechargeable battery pack, BB120 shielded BNC adapter, PM8907 line adapter/charger, i400s AC current clamp, AB200 alligator clip set, TP1 test probe set, C120 hand carrying case, OC4USB interface cable, SW43W FlukeView software, VPS 40 voltage probe, Fluke 61 IR thermometer, user and application manual.

Ordering information

Fluke 43B Power Quality Analyzer (single-phase)

Specifications

(Check the Fluke web for detailed specifications)

Menu items	Measurements	Ranges	Accuracy	
Volts/Amps/Hz	Volts	5,000 V - 1250 V	$\pm(1\%+10)$	
	Amps	50.00A - 50.00 kA	$\pm(1\%+10)$	
	Mains frequency CF Crest Factor	40.0 - 70.0 Hz 1.0 à 10.0	$\pm(0.5\%+2)$ $\pm(5\%+1)$	
Power	Watts, VAR, VA PF, DPF, COS ϕ	250 W - 1.56 GW 0.25 W-0.9 0.90-1.00	$\pm(4\%+4)$ ± 0.04 ± 0.03	
	Harmonics	Volts	1 st to 51 st harmonic	$\pm(3\%+2)$ to $\pm(15\%+5)$
		Amps	1 st to 51 st	$\pm(3\%+8)$ to $\pm(15\%+5)$
Watts		1 st to 51 st	$\pm(5\%+2)$ to $\pm(30\%+5)$	
Sags & Swells	K-factor	1.0 to 30.0	$\pm 10\%$	
	Voltage and Current	4 min-16 days selectable	$\pm(2\%+10)$	
Transient Capture	40 ns pulse width Up to 40 transients	Select 20/50/100/200% above or below line voltage	$\pm 5\%$ of full scale	
Inrush Current	1 sec. to 5 min selectable	1 A to 1000 A	$\pm 5\%$ of full scale	
Ohms/Continuity/ Capacitance	Ohms	500.0 Ω to 30.00 M Ω	$\pm(0.6\%+5)$	
	Capacitance	50.00 nF to 500.0 μ F	$\pm(2\%+10)$	
	Temperature (with accessory)	$^{\circ}$ C $^{\circ}$ F	-100.0 $^{\circ}$ C to 400.0 $^{\circ}$ C -200.0 $^{\circ}$ F to 800.0 $^{\circ}$ F	$\pm(0.5\%+5)$
Scope	DC, AC, AC+DC, peak, peak-peak, Hz, duty cycle, phase, pulse width, crest factor	Sampling rate: Bandwidth: Voltage BW (Channel 1) Current BW (Channel 2)	25 MS/sec 20 MHz 15 kHz	
Screen saves	All functions	20 screens		
Recording	V/A/Hz, Power, Harmonics, Ω /Cap, Temperature, Scope	4 min - 16 days selectable	Select any two parameters display mode in each	

Battery life: Rechargeable Ni-MH pack (charger included), 6 hrs typical (continuous)

Shock & Vibration: Mil 28800E, Type 3, Class III, Style B.

Operating temperature: 0 $^{\circ}$ C to 50 $^{\circ}$ C; Case: IP51 (dust, drip, waterproof)

Size (HxWxD): 232 mm x 115 mm x 50 mm; Weight: 1.1 kg

Three Years Warranty

Recommended Accessories



i2000flex
See page 102

i1000s
See page 102

80TK
See page 104

PAC91
See page 69



宇宏企業股份有限公司 RADIOTEK CORPORATION

台北縣三重市重新路五段609巷16號6樓之1

TEL: 02-22782269 FAX: 02-22782059

Home page : www.radiotek.com.tw

E-mail : salesmag1@rdmail.com.tw